

Going Deeper

Elemental showed us how fire people weren't really accepted into society. Read Mark, chapter 1, verses 40-45. Jesus was seen to be with groups of people that society did not accept. He reached out to them and changed their lives. Who are the groups Jesus would make a point of going to today and why?

In Revelations, chapter 7, verses 9-10, God gave Paul a glimpse of how people, one day, will all be together. Why do you think it's important to God that we are all different? God could have made us all the same, but didn't.

Read the story of The Good Samaritan, in Luke, chapter 10, verses 25-37. Here we see two people from different tribes who hated each other (think of how the elements weren't really keen on the fire people). In The Good Samaritan, the two men reached out to one another (like Ember and Wade) and changed the outcome of the robbed man's life. Who are you in this story? What is it God is challenging you on? Who do you want to reach out to? How has God challenged you through this session? What is God asking to you do next?

The BIG Question

How do we make an inclusive world?



Created by Jess Poole - Synod of Scotland
Email: childrensministry@urcscotland.org.uk
Ruth White - Wessex Synod
Email: cydo-s@urcwessex.org.uk
© 2024 Jess Poole and Ruth White



ELEMENTAL

Mixing it up -
Live outside of your element



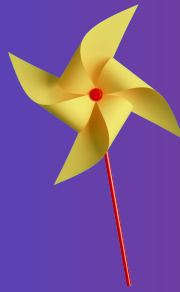
Activities

Wondering



STEP 1

Choose your element! Which element would you be in? Surround yourself with these colours. Remember, families can have different elements in them!



What's your element? Do something that's connected to your element. For example, if you're earth, grow something; air - make paper windmills; water - make ice lollies; fire - bake something. What will you make?

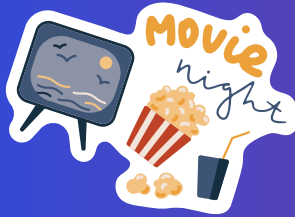
When Ember is going on deliveries (11m), she says "The city isn't made with fire people in mind". The fire people immigrated to Element city, and were a minority there. Like the fire people, what minorities are there in our world? Who are the groups of people that the world isn't designed for? For example, people with disabilities; children in an adult world; people from different cultures who are living in a different culture.

Celebrating the uniqueness and differences. Watch the scenes where Wade made a rainbow (41m) and Ember made a vase (54m). See the sense of awe and wonder that they saw in each other. Think about the people you recognised from the question above. How do we recognise and celebrate the differences in other people?

At the dam (36m, 49m) and the visit to the Vivisteria plant (1h6m), we see that when the elements came together, it benefitted everyone. What would working together with other groups look like to you? Where are the opportunities for you to do this?

STEP 2

Time to snuggle in and watch the film!



Fire Extinguisher! See how the elements can affect one another. Find out how to make a simple fire extinguisher by following this link bit.ly/URCelemental (scroll down the page to find instructions).

Blending. Make a friendship bracelet using the colours of the elements. Have a go at some marbling. Follow this link to find out how, using only shaving foam and paint - bit.ly/URCmarbling.



STEP 3

What spoke to you in the film? Where do you see yourself or God in the film? Have a chat while you do the activities.

